



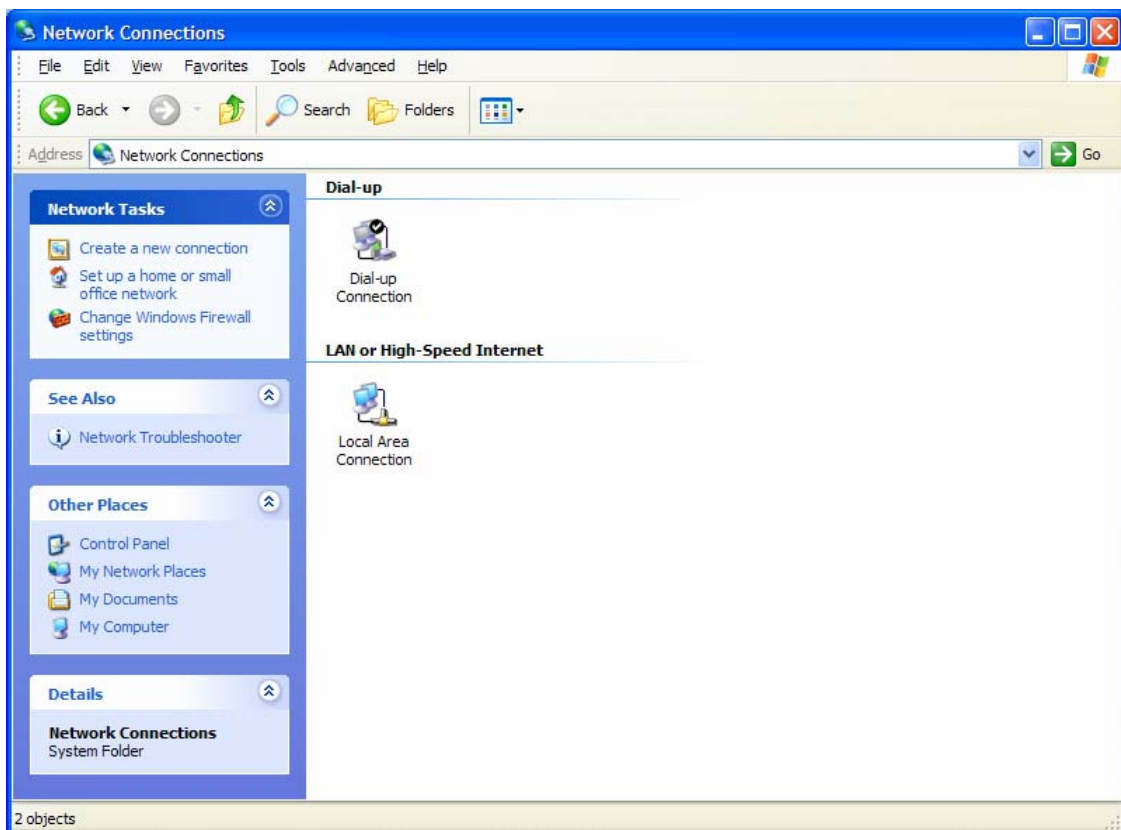
Configuring the MD95038 Router (in Windows XP)

Do NOT connect your router to power or PC at this stage.

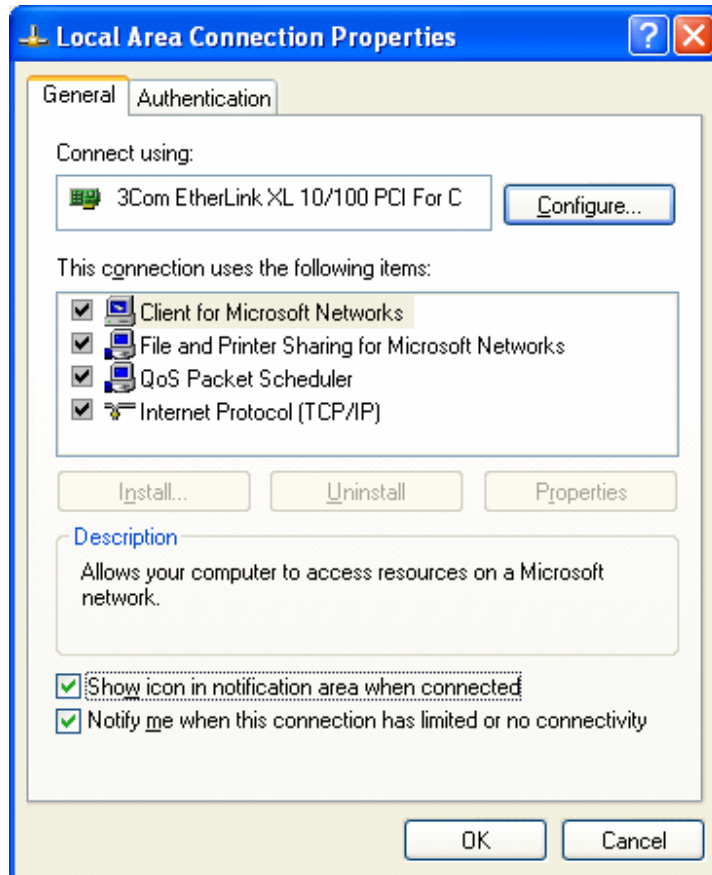
Click Start

Click Control Panel

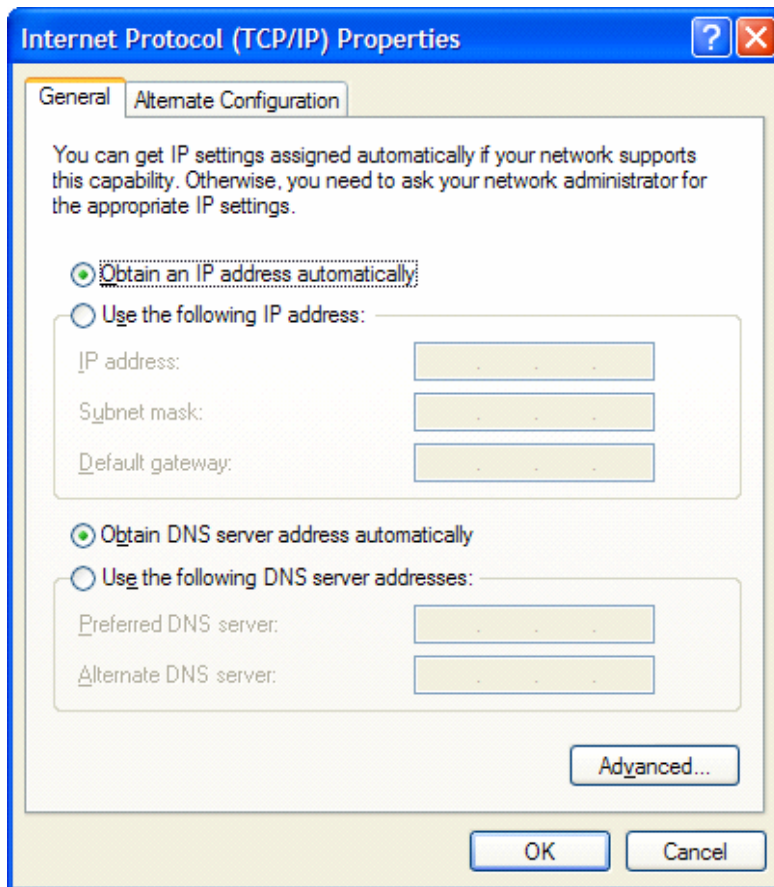
Click Network Connections



Double click the Local Area Connection icon

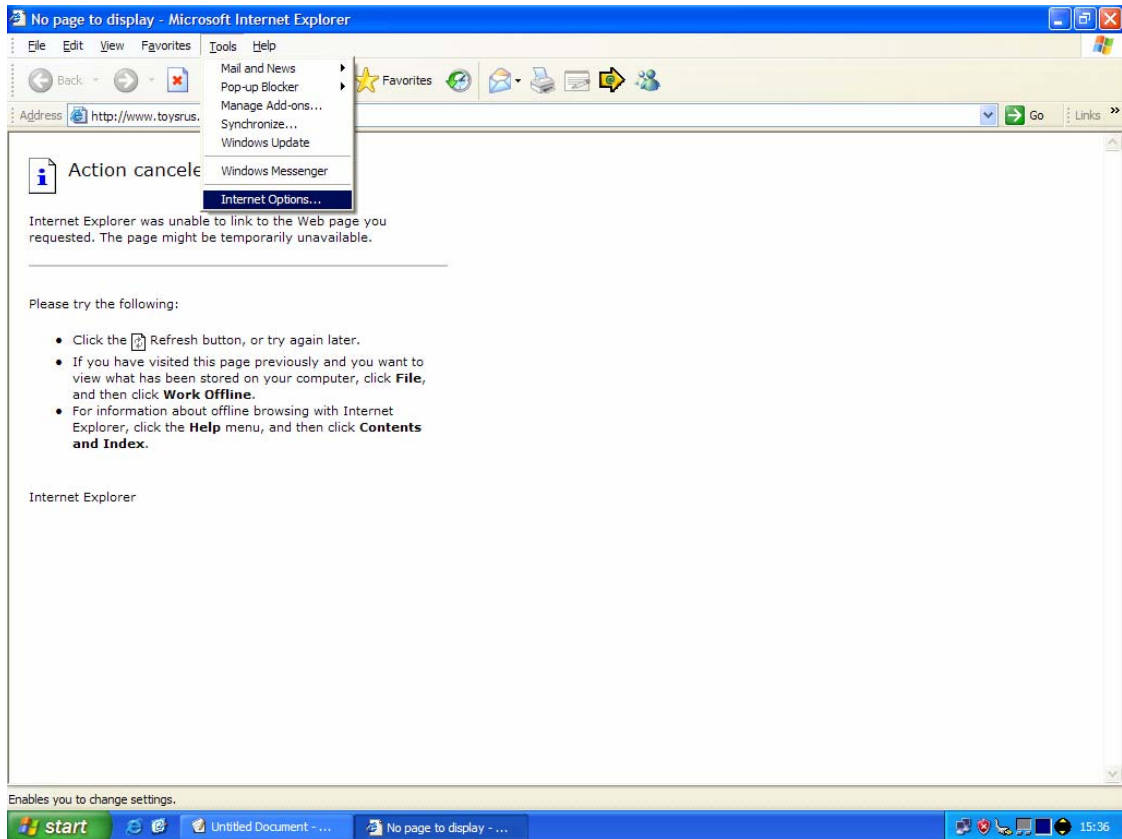


Make sure "Show icon in notification area when connected" is ticked
Click on "Internet Protocol (TCP/IP)"
Click on "Properties" just below



Make sure both options are set to "Obtain automatically"
Click OK
Close the previous window.

Next open Internet Explorer
Click Tools
Click Internet Options...

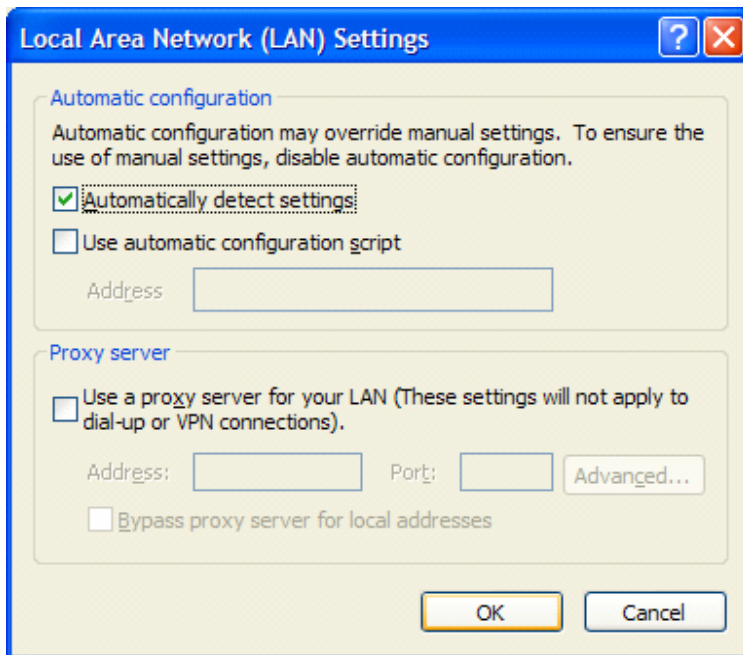


Click the Connections Tab



Select "Never Dial A Connection"

Click on LAN Settings...



Tick the box for "Automatically Detect Settings"
Make sure no other options are ticked

Click OK

On next screen click Apply and then OK

Close Internet Explorer and turn the PC off (Shut Down)

Leave the system for 30 seconds and Power back on.

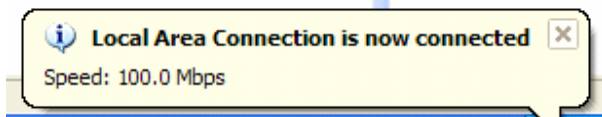
When back in Windows:

Connect the router to the power supply. Lights will start to come on

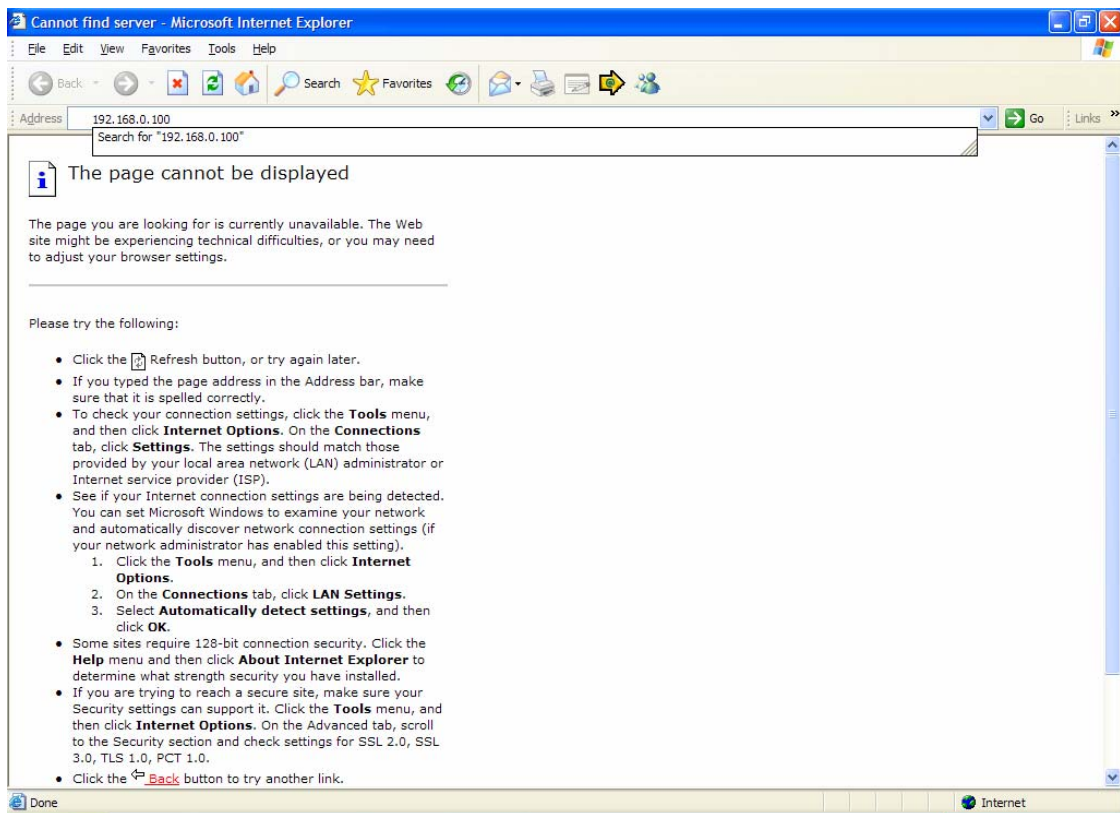
Connect the router to the PC via the supplied Ethernet cable

Do not connect the ADSL cable at this stage

You should get a notification that you have connected

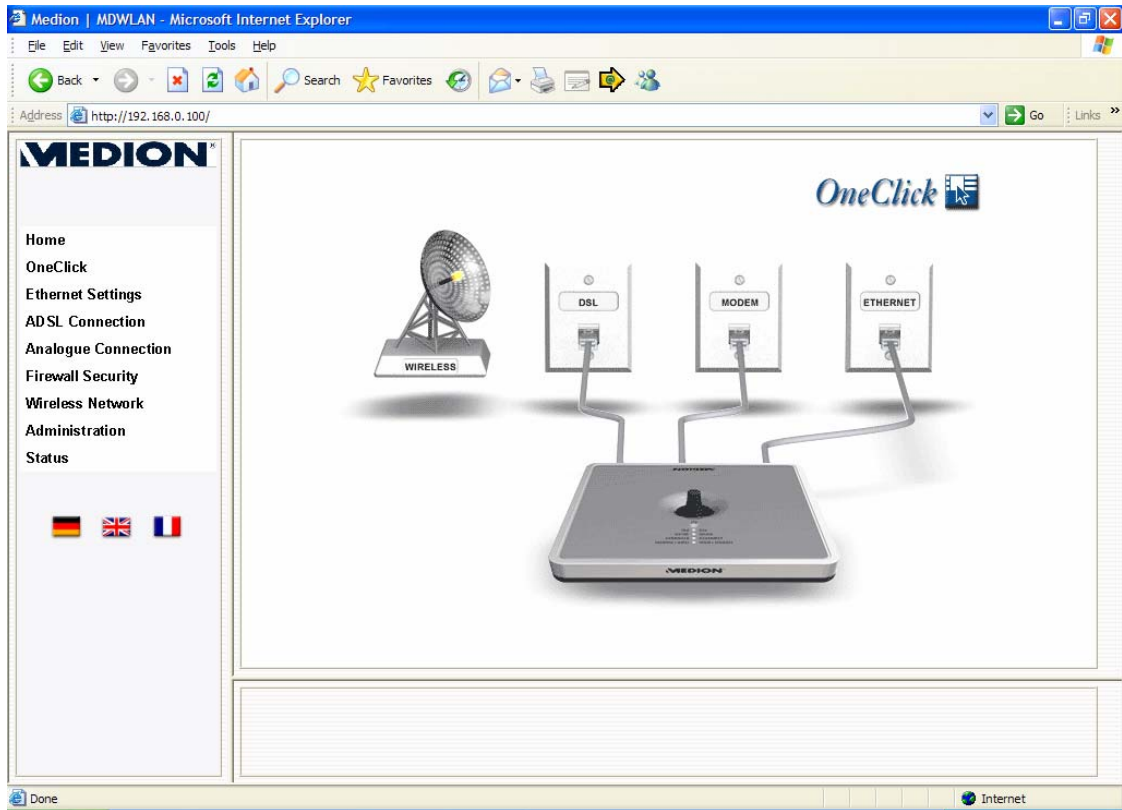


Open Internet Explorer



In the address bar of Internet Explorer type 192.168.0.100
Press enter

The following appears



Click on the British Flag (middle option) in bottom left corner of screen



Click on "ADSL Connection" from the left hand menu



When the Connect box appears



Enter the default username and password

User name: admin

Password: admin

Click OK

Select Great Britain as the country

Medion | MDWLAN - Microsoft Internet Explorer

Address: http://192.168.0.100/

MEDION

Home
OneClick
Ethernet Settings
ADSL Connection
Analogue Connection
Firewall Security
Wireless Network
Administration
Status

Country: Great Britain
Internet provider: BTOpenworld
User name: pp
Password: ●●
Tariff type: Online time
Shorthold: 0 minutes

Expert Mode Cancel Apply

DSL

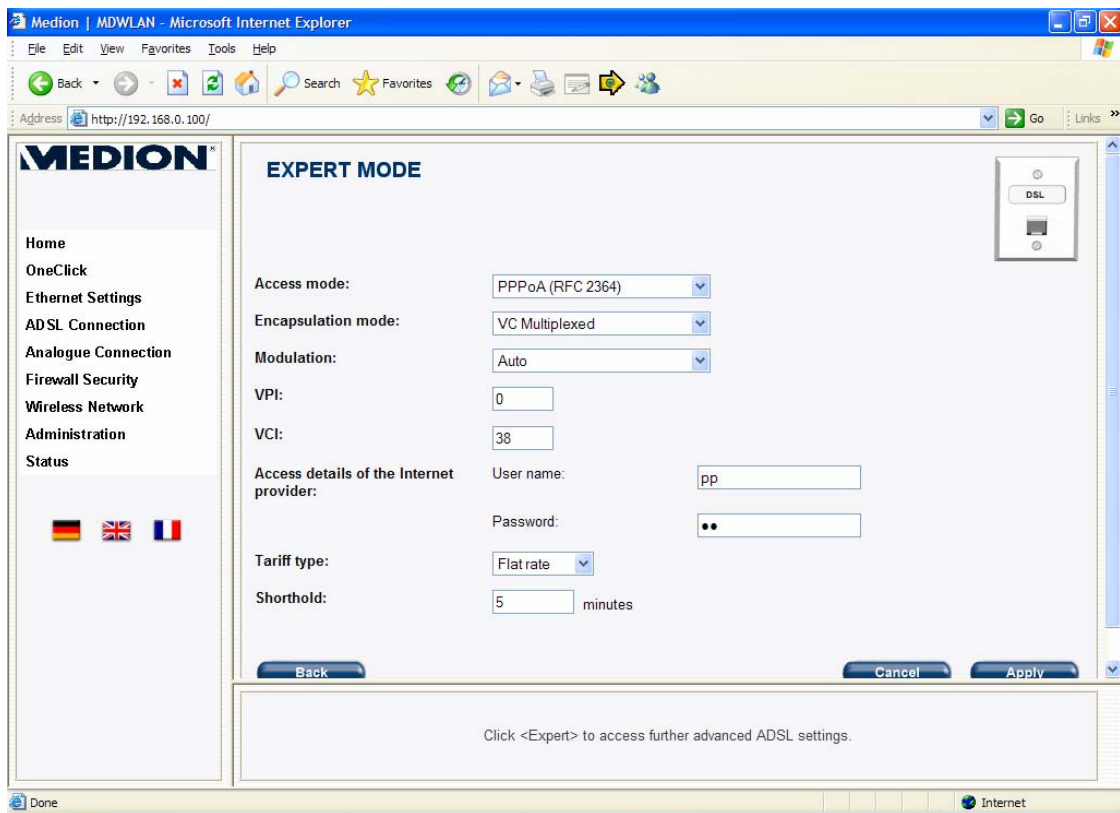
If your ISP is listed in the "Internet Provider" drop down box then select it.

Country: Great Britain
Internet provider: BTOpenworld
User name: pp
Password: ●●
Tariff type: Online time
Shorthold: 0 minutes

Expert Mode Cancel Apply

DSL

If it isn't listed then select "Expert Mode" from the bottom left



These settings will need to be obtained from your Internet Service Provider (ISP). If you have not obtained these settings from your ISP you MUST obtain them before contacting the Medion helpline.

We will be unable to provide help without these settings.

You will need:

Access Mode

Encapsulation Mode

Modulation

VPI VCI

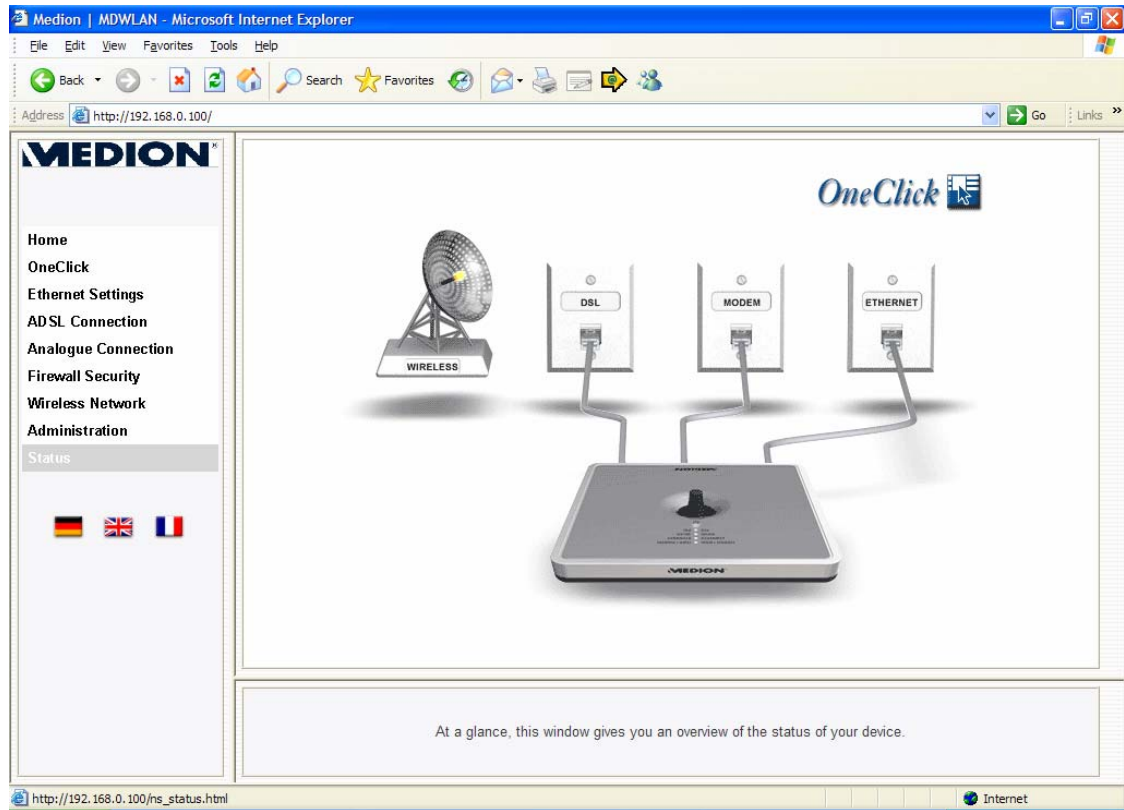
User name

Password

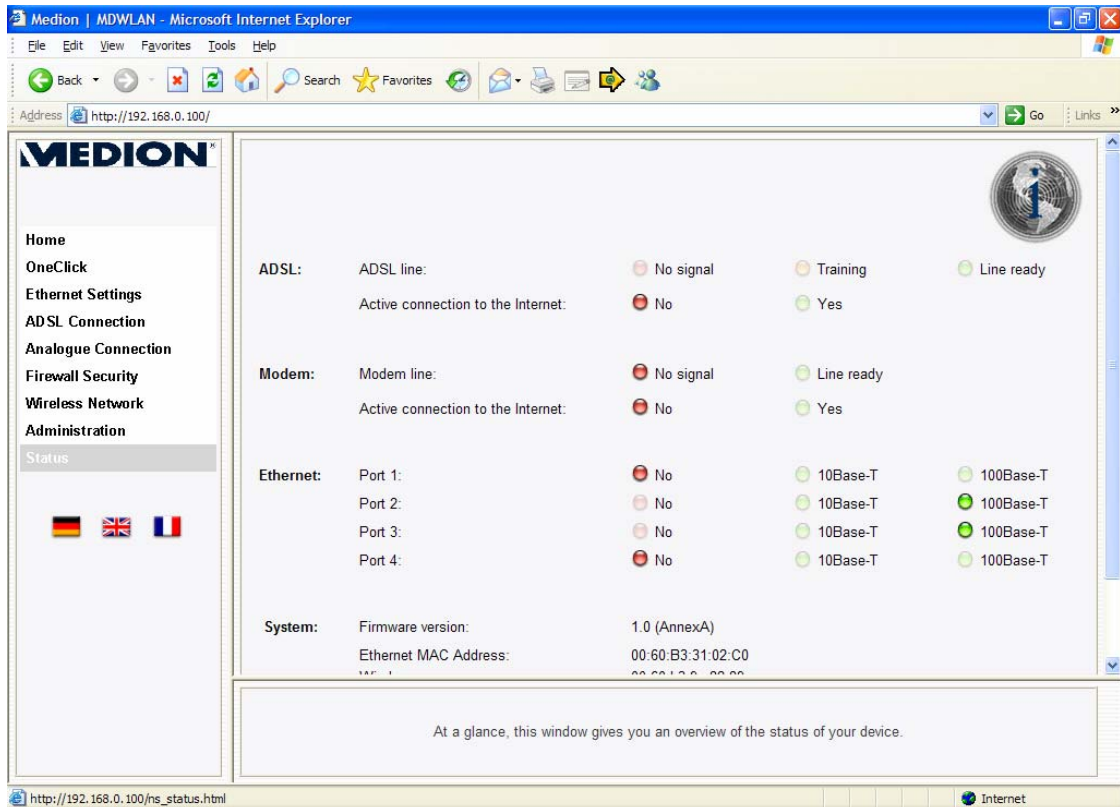
"Tariff type" can be set to "Flat Rate"

"Shorthold" should be set to "0"

Click Apply once you have input all these settings correctly
Then connect the ADSL cable to the filter and the router



Click on "Status" from the left hand menu



The ADSL line status should go to "Line Ready" once it has trained and established the connection – this may take several minutes
The Active internet connection should go to "yes" within a few more minutes.

If they don't you will need to check the "expert settings" and re input them, making sure they are all correct (in ADSL 'Expert Settings').

If you still can not connect please contact us:

Medion Helpline 0870 727 0370

(National rate call charge applies)